



2/2-way solenoid valve
NC - Valve normally closed

Pilot operated piston valve
The mentioned minimum pressure difference between inlet and outlet is necessary for proper operation.
In standard (NC) the valve closes with spring power.

■ Solenoid valve for high pressure applications

TECHNICAL SPECIFICATIONS

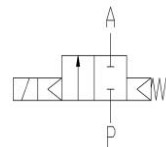
Type of control	Pilot-operated
Design	Piston design
Connection	Sleeve connection G1/4 - G1/2 DIN ISO 228/1 (BSP) <small>Further connections like NPT on request</small>
Installation	Preferable with actuator upright
Pressure	5 - 350 bar (see table on page 2)
Medium	Clean, neutral gaseous Optionally for liquids
max. viscosity	22 mm ² /s
Temperature range	Medium: -40 °C / +80 °C Environment: -40 °C / +50 °C <small>Taking into account other influencing parameters</small>
Body material	St. steel 1.4301
Metallic inner parts	Stainless steel
Sealing	PEEK
Supply voltage	AC~ 24V, 110V, 230V DC= 12V, 24V <small>Other supply voltages on request</small>
Voltage tolerance	-10% / +10%
Power consumption	.032 = 11 Watt .012 = 18 Watt .048 = 10 Watt ⚠ .148 = 10 Watt ⚠
Protection class	IP65 according to DIN 60529
Duty factor	100% ED-VDE 0580
Connection type	With coil .032: Device plug DIN 43650 With coil .012: Device plug DIN 43650 With coil .048: terminal box With coil .148: 3m connection cable
Ex-proof	acc. to 2014/34/EU (ATEX)

VALVE FEATURES

- For high pressure applications up to 350 bar
- Pressure difference is required
- High life time
- Reliable and sturdy sealing elements
- Option WA: for liquids

FUNCTION

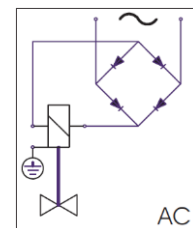
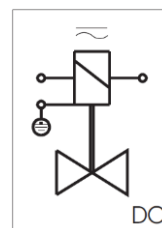
NC – non energized closed



CONNECTION DIAGRAM

For AC/DC coils

For DC coils
w/ integr. rectifier



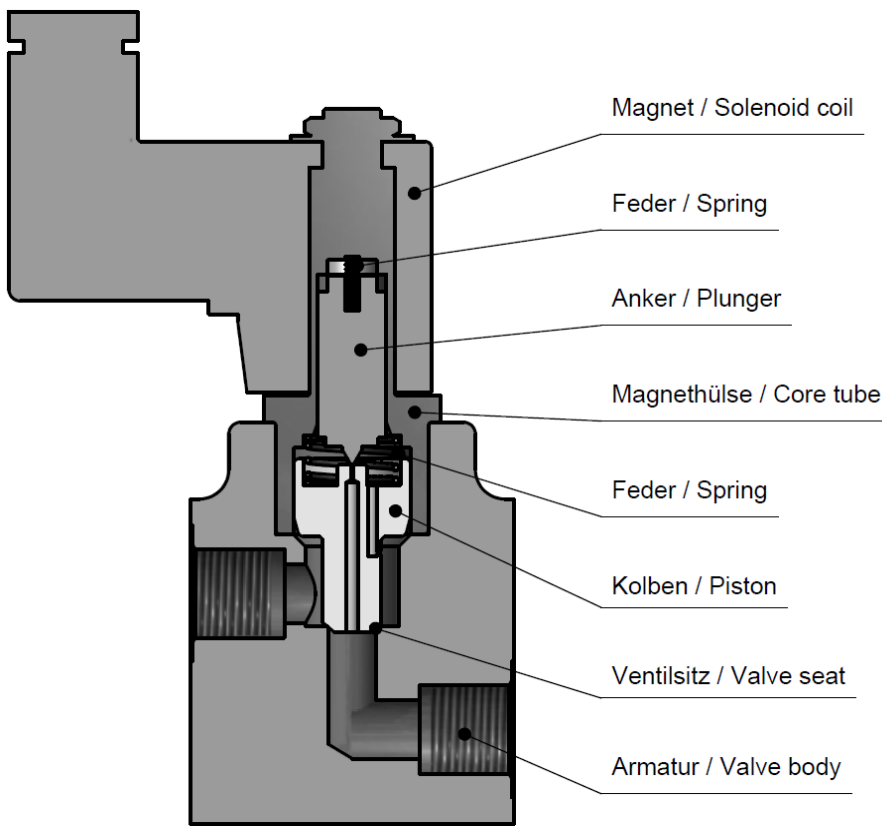
CERTIFICATES



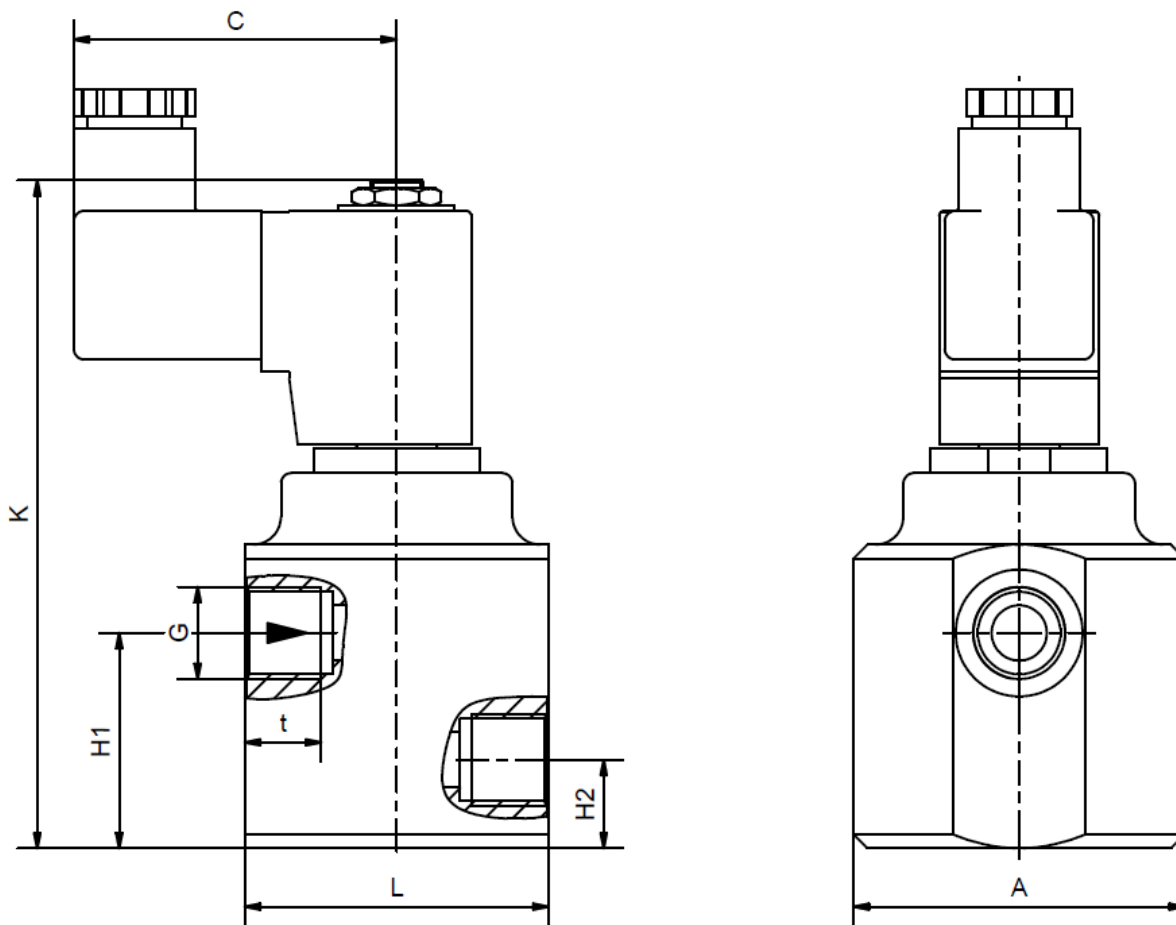
Special design for liquids available
Specifications and drawings on request.

TECHNICAL FEATURES

G	Seat Ø mm	Kv-value m³/h	Standard type	max. pressure for coils		Max. pressure for option WA with coil		
				.032	.148 / .048	.032	.012	.148 / .048
1/4	8	1,2	8/000-48	5-350	5-350	3-80	3-150	3-120
3/8	8	1,2	8/000-58	5-350	5-350	3-80	3-150	3-120
1/2	8	1,2	8/000-68	5-350	5-350	3-80	3-150	3-120
1/2	15	2,5	8/000-23	5-350	5-350	3-80	3-150	3-120



DIMENSIONS



Coil	.032 / .012 / .048 / .148			
Type	8/000-48	8/000-58	8/000-68	8/000-23
G	1/4	3/8	1/2	1/2
A	60	60	72	72
C	59	59	59	59
H1	39	39	39	39
H2	16	16	16	16
K	121	121	121	121
L	55	54	65	65
t	13,5	13,5	15	15
kg	1,5	1,5	2	2,1

*Differing dimension "C" for ATEX coils

INFORMATION

- It is imperative to observe the installation and safety instructions in our operating and service manuals.
- Required ordering information: valve type, function NC/NO, pressure range, connection, nominal width, medium, flow rate, medium and ambient temperatures, connection voltage.
- **For information on the heating and performance of solenoid coils, refer to the corresponding "Coils" data sheet.**
- **Detailed production-specific drawings and other technical information will be made available when an order is placed.**

PLEASE NOTE

Each individual application decides which valve type is required, the main factor being the resistance of the materials to the operating medium. The correct selection of materials requires knowledge of the concentration, temperature and degree of contamination of the medium. Other criteria include the operating pressure and max. volumetric flow, since, in addition to high temperatures, high pressures and high flow rates must also be taken into account when selecting the materials.

All materials used for our valves, be it housing, seals or magnets, will be carefully selected in view of the different application areas. Any information given is non-binding and serves for orientation only. No claims under warranty can be derived therefrom.

ORDERING CODE

Type	Connection	Body	Sealing	Coil	Option		
8/000	5 8	0 6	1 5	1 4 8	x x		
48	G 1/4	06	St. steel 1.4301	03	11 W	2	Standard IP65
58	G 3/8			01	18 W	8	2014/34/EU(ATEX)
68	G 1/2 DN8	15	PEEK	04	10 W		
23	G 1/2 DN15			14	10 W		WA Liquids

The GSR logo is a registered trademark of GSR Ventiltechnik GmbH & Co. KG

Note: All texts and images are the property of GSR Ventiltechnik GmbH & Co. KG and must not be replicated or modified, not even in part, without written approval

Original products may differ from the product images shown, due to different materials and the like

Subject to error and changes

GSR Ventiltechnik
GmbH & Co. KG
Im Meisenfeld 1
D-32602 Vlotho
T +49 5228 779-0
info@ventiltechnik.de
www.ventiltechnik.de