



**3/2-way pressure controlled valve**  
**UN - Universal design**

**Direct controlled valve.**

**No differential pressure is necessary for operation. When energized, the valve seat is opened directly.**

**In standard (NC) the valve closes with spring power.**

■ **Pressure controlled valve for high pressure applications**

## TECHNICAL SPECIFICATIONS

Type of control	Direct operated, no pressure difference necessary
Design	Piston design
Connection	Sleeve connection G1/4 - G1 DIN ISO 228/1 (BSP) <small>Further connections like NPT on request</small>
Installation	Preferable with actuator upright
Pressure	0 - 500 bar (see table on page 2)
Medium	Clean, neutral gaseous and liquid media
max. viscosity	22 mm <sup>2</sup> /s
Temperature range	Medium: -10 °C / +80 °C Environment: -10 °C / +60 °C <small>Taking into account other influencing parameters</small>
Body material	St. steel 1.4571
Metallic inner parts	St. steel
Sealing	PTFE
Pilot pressure	4 - 10 bar
Pilot medium	Clean, neutral gaseous
<b>Pilot valve</b>	<b>A7231/1002/....</b>



3/2-way direct operated, NC  
 G1/8, orifice 1.5mm, 0-8 bar  
 brass / st. steel / FKM

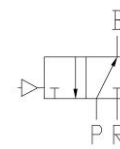
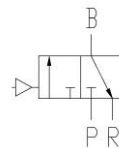
## VALVE FEATURES

- For high pressure applications up to 500 bar
- No pressure difference required
- High life time
- Simple compact valve design
- High-quality materials
- Reliable and sturdy sealing elements

## FUNCTION

NC – non energized closed

NO – non-energized open

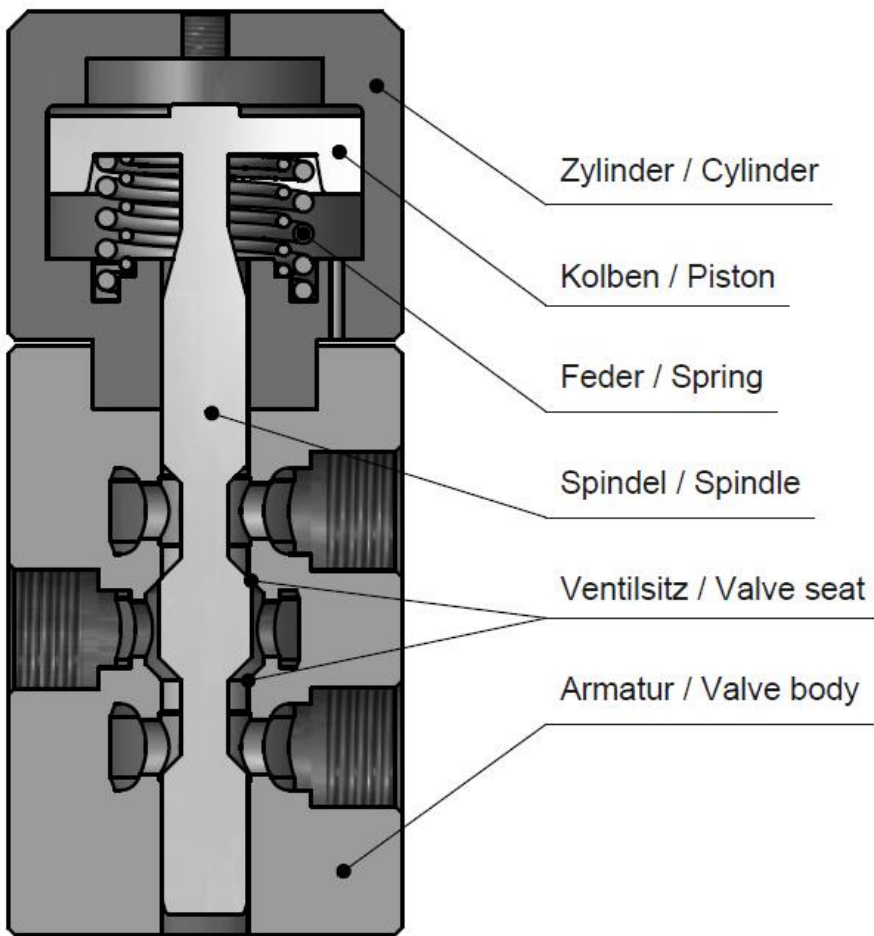


## CERTIFICATES

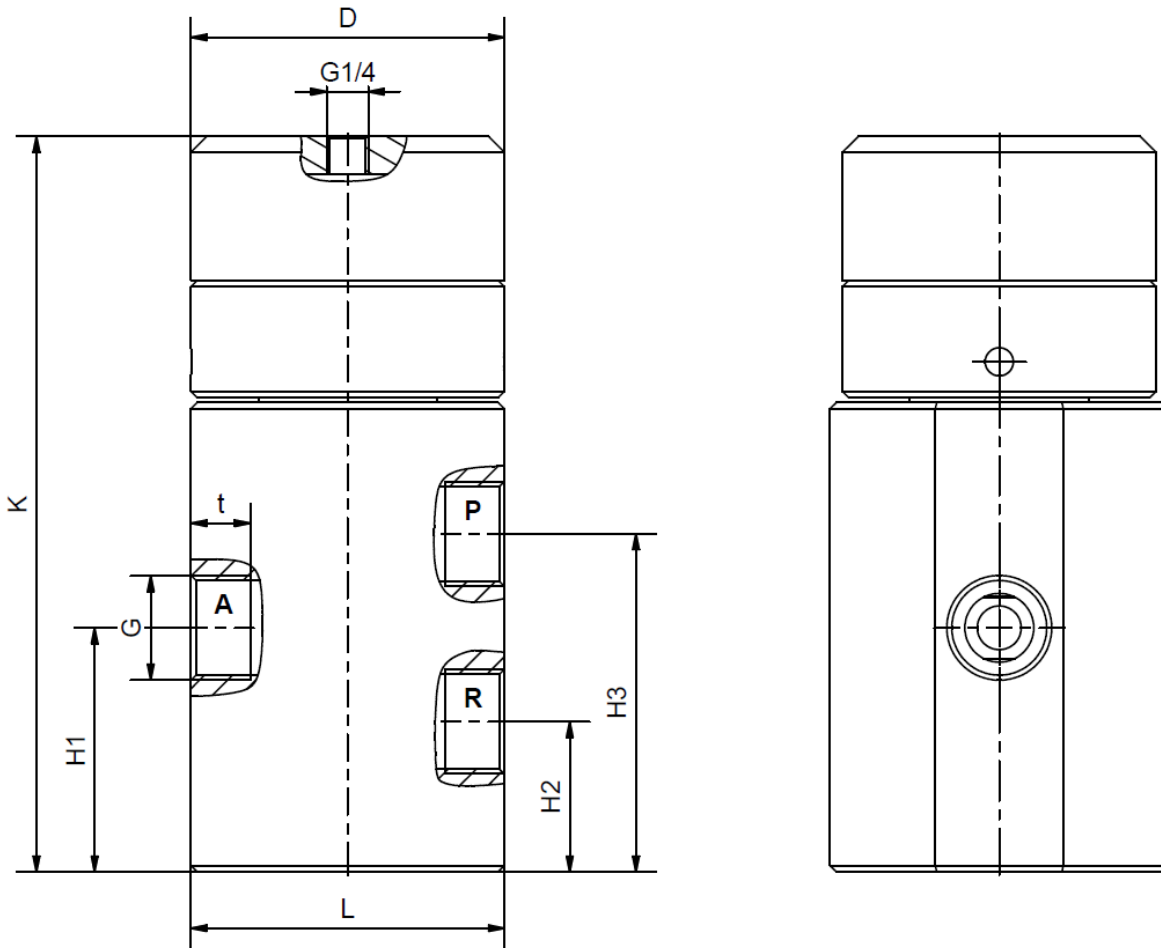


# TECHNICAL FEATURES

G	Seat Ø mm	Kv-value m³/h	Standard type	max. pressure range at min. 6 bar	
				Actuator 7.05	Actuator 7.08
1/4	10	1,0	1/921-21-0815-....	0-320	0-500
3/8	10	1,0	1/921-22-0815-....	0-320	0-500
1/2	10	1,2	1/921-23-0815-....	0-320	0-500
3/4	22	7,0	1/921-24-0815-....	0-100	0-350
1	22	8,0	1/921-25-0815-....	0-100	0-350



# DIMENSIONS



Actuator	7.05					7.08				
Type	1/921-21	1/921-22	1/921-23	1/921-24	1/921-25	1/921-21	1/921-22	1/921-23	1/921-24	1/921-25
G	1/4	3/8	1/2	3/4	1	1/4	3/8	1/2	3/4	1
D	78	78	78	78	78	100	100	100	100	100
H1	52,5	52,5	52,5	78	78	52,5	52,5	52,5	78	78
H2	32,5	32,5	32,5	48	48	32,5	32,5	32,5	48	48
H3	72,5	72,5	72,5	108	108	72,5	72,5	72,5	108	108
K	188	188	188	230	230	197	197	197	235	235
L	70	70	70	100	100	70	70	70	100	100
t	12,5	12,5	14,5	17	19	12,5	12,5	14,5	17	19
kg	6	6	6	11,8	11,8	7,9	7,9	7,9	13,2	13,2

## INFORMATION

- It is imperative to observe the installation and safety instructions in our operating and service manuals.
- Required ordering information: valve type, function NC/NO, pressure range, connection, nominal width, medium, flow rate, medium and ambient temperatures, connection voltage.
- **For information on the heating and performance of solenoid coils, refer to the corresponding "Coils" data sheet.**
- **Detailed production-specific drawings and other technical information will be made available when an order is placed.**

## PLEASE NOTE

Each individual application decides which valve type is required, the main factor being the resistance of the materials to the operating medium. The correct selection of materials requires knowledge of the concentration, temperature and degree of contamination of the medium. Other criteria include the operating pressure and max. volumetric flow, since, in addition to high temperatures, high pressures and high flow rates must also be taken into account when selecting the materials.

**All materials used for our valves, be it housing, seals or magnets, will be carefully selected in view of the different application areas. Any information given is non-binding and serves for orientation only. No claims under warranty can be derived therefrom.**

## ORDERING CODE

Type	Connection	Body	Sealing	Actuator	Option
<b>1/921</b>	<b>2 3</b>	<b>0 8</b>	<b>1 5</b>	<b>7 5</b> <b>0 5</b>	<b>x x</b>
	21 G 1/4	08 St. steel 1.4571		7 . Closed wo/ press.	
	22 G 3/8			8 . Open wo/ press.	
	23 G 1/2	15 PEEK		9 . double-acting	
	24 G 3/4			. 0 Standard-Actuator	
	25 G 1			. 3 Actuator-St. steel	
				. 5 Actuator-nickel-pl.	
				. 5 50 mm	
				. 8 80 mm	

The GSR logo is a registered trademark of GSR Ventiltechnik GmbH & Co. KG

Note: All texts and images are the property of GSR Ventiltechnik GmbH & Co. KG and must not be replicated or modified, not even in part, without written approval

Original products may differ from the product images shown, due to different materials and the like

Subject to error and changes

GSR Ventiltechnik  
GmbH & Co. KG  
Im Meisenfeld 1  
D-32602 Vlotho  
T +49 5228 779-0  
info@ventiltechnik.de  
www.ventiltechnik.de