



PRESSURE GAUGE

SA 40 C.E.

(MOD. SA 40 C.E.)

Stainless steel sanitary gauge with separator and electrical contact /s



Produttore qualificato
M.O.C.A.
Reg. CE n. 1935/2004

These instruments are designed for pressure measurement. Used in the food, chemical, petrochemical industry, conventional power plants and suitable to withstand the most unfavorable operating conditions, determined by the aggressiveness of the process fluid and the environment and for fluids that do not have a high viscosity or that do not crystallize. Called separator which consists of a suitably shaped separation membrane, made of AISI 316 stainless steel. Pressure gauge and separator form a single body. The separator is equipped with a threaded connection according to the DN-SMS-IDF-CLAMP standards.

The pressure gauge with SABA separator is amortized as standard, so it can work even in case of strong pulsations without problems. The instrument is complete with minimum, maximum, minimum and maximum flow rate alarms adjustable over the entire range of the scale.



TECHNICAL FEATURES:

Measuring ranges: 2.5 - 4 - 6 - 10 - 16 - 20 - 25 - 40 - 60 - 100 bar.

Dial: white with black lettering: dial Ø 100 - 150 mm

Index: steel pointer with micrometric zeroing device

Sensitive element: Laser welded AISI 316 membrane

Connection: both radial and rear, according to DN - SMS - IDF - CLAMP standards

Amplifier movement: in stainless steel

Housing: Ø 63 - 100 - 150 in stainless steel with Plexiglas glass with double U-seal

Filling liquid: non-toxic

Shock absorber: built-in standard

Accuracy: 1% of the full scale value

Degree of protection: IP 65

Type: magnetic snap

Set point adjustment (trip values): from outside, with button

Contact material: Silver and nickel alloy (Ag 80 - Ni 20)

Supply voltage: 24 V max

Current: 1A max

Intervention capacity: 30 W / 50 VA max

Ambient temperature limits: -20 / + 140 ° C.

Max approach of set points: 2% v.f.s.

Intervention difference with respect to the set point value due to the attraction force of the magnet (adjustable): 2-6%

Added indication error: 0.5-2% v. f. s.

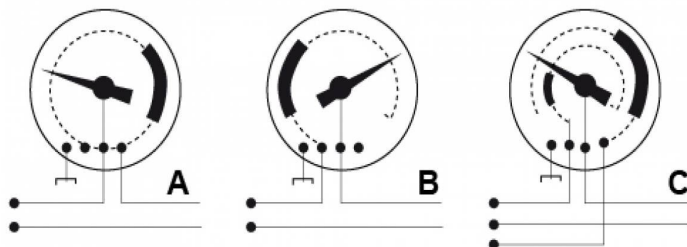
The instrument is equipped with 1 or 2 electrical contacts:

At a contact of min

a contact of max

a contact of min. and one of max. adjustable over the entire scale

In detail:



A: Electrical contact of max.

B: Electrical contact of min.

C: 1 electrical contact of max, 1 of min.



INDOOR

Certificates:

Certification of materials

MOCA certification (material objects in contact with food – on request)

Pressure gauge calibration certificate (list of measured single values; 5 measurement points)

Order information:

Scale field / Process connection / Parts / Certificates