



PRESSURE GAUGE

SA 40

(MOD. SA 40)

Stainless steel sanitary manometer
with separator



These instruments are designed for pressure measurement. Used in the food, chemical, petrochemical industry, conventional power plants and suitable to withstand the most unfavorable operating conditions, determined by the aggressiveness of the process fluid and the environment and for fluids that do not have a high viscosity or that do not crystallize. Called separator which consists of a suitably shaped separation membrane, made of AISI 316 stainless steel. Pressure gauge and separator form a single body. The separator is equipped with a threaded connection according to the DN-SMS-IDF-CLAMP standards. The pressure gauge with SABA separator is amortized as standard, so it can work even in case of strong pulsations without problems.

TECHNICAL FEATURES:

Measuring ranges: 2.5 - 4 - 6 - 10 - 16 - 20 - 25 - 40 - 60 – 100 bar.

Dial: white with black lettering: dial Ø 63 - 100 - 150 mm.

Housing: Ø 63 - 100 - 150 in stainless steel with Plexiglas glass with double U-seal

Index: in steel with zero-setting micrometric device

Sensitive element: Laser welded AISI 316 membrane

Connection: both radial and rear, according to DN - SMS - IDF - CLAMP standards

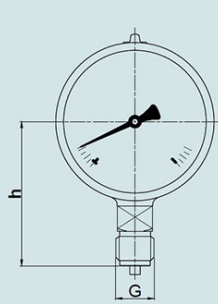
Amplifier movement: in stainless steel

Filling liquid: non-toxic

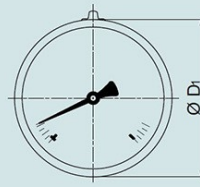
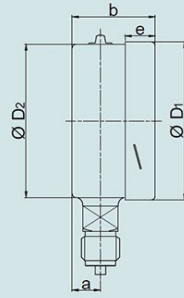
Shock absorber: built-in standard

Accuracy: 1% of the full scale value

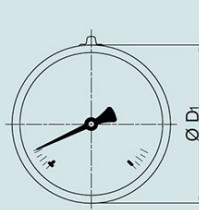
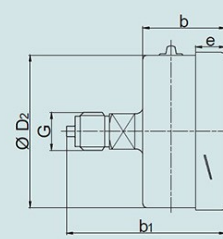
Degree of protection: IP 55



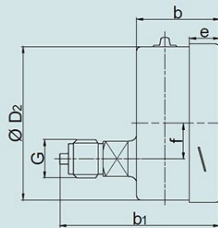
INOX PRESSURE GAUGE Ø63 -100mm RADIAL CONNECTION GAS



INOX PRESSURE GAUGE Ø63mm CENTRE BACK CONNECTION GAS



INOX PRESSURE GAUGE Ø100mm LOWER BACK CONNECTION GAS



LEGEND:

- ØD₁ Front case diameter
- ØD₂ Rear case diameter
- ØG Gas connection diameter
- a Rear middle thickness
- b Instrument thickness
- b₁ Installation height
- e Front frame case thickness
- f Eccentricity rear attachment
- h Height of the center of the dial

Ø DN	Dimensions in mm									Weight in kg	
	a	b	b ₁	D ₁	D ₂	e	f	G	h±1	dry	glycerine filled
Ø 63	8,7	33	61	63	62	12	-	G ¾ B	56	0,20	0,26
Ø 100	14	50	90	100	99	17	28	G ½ B	88	0,65	1,08



Certificates:

Certification of materials

MOCA certification (material objects in contact with food – on request)

Pressure gauge certification: ATEX (on request)

Pressure gauge calibration certificate (list of measured single values; 5 measurement points)

Order Informations:

Scale field / Process connection / Parts / Certificates

Saba



Saba s.a.s. di Sardi Paolo & C.

P.IVA 12674940155

Via Piersanti Mattarella, 35 - 20093 Cologno Monzese (Milano) - Italia

Tel. 02 26143349 - Fax 02 94435091

info@sabastrumentazione.com

www.sabastrumentazione.com